



WHY DO INTERNET USERS PREFER ONLY GOOGLE?



The internet is a highly competitive and constantly changing landscape.

This means that there are always new things to explore and people to learn from. As a result, there are a lot of choices for people to make when it comes to what type of search engine they use. One of the most popular search engines, Google, has a lot of information on its website. .



What Makes Google The Search Engine Of People's Choice?



Impulse
Digital

- Search Intent Prioritized
- Faster Than Your Human Thoughts

- Users Obtain What Suits Them The Most
- Users' Life Made Easy

- Improved AI And Algorithms
- Best-In-Class Ads And Toolset
- World-Class Support

SEARCH INTENT PRIORITIZED

Search Intent Prioritized, uses natural language processing to determine which search results are the most important for a given query. This tool is designed to help the user find the information they are looking for quickly and efficiently.



FASTER THAN YOUR HUMAN THOUGHTS

Google is a search engine that offers a plethora of information to its users. Its interface is more like a computer program than a traditional website, which has caused it to become more and more popular. The use of Google has allowed people to access information from anywhere and at any time.

USERS OBTAIN WHAT SUITS THEM THE MOST

As the dominant search engine, Google has helped consumers and businesses alike to find anything they are looking for. However, with the internet being a global space, one might wonder what it is like to use a search engine that is primarily focused on geo-location targeting.



USERS' LIFE MADE EASY

Google is a search engine that is on the internet. The search engine has been very useful for people who want to find anything that they are looking for.

Google's AI and algorithms have improved greatly over the past decade. From self-driving cars to AI that's able to detect a diabetic's eyes and deliver an accurate diagnosis, Google has introduced many innovations that are reshaping the way the world operates.

IMPROVED AI AND ALGORITHMS

Google Ads offers all the tools necessary for advertisers to succeed in the digital world. It includes everything from Google Ads, Google Analytics, and Search Engine Optimization (SEO) to video marketing, social media, and landing page design.

BEST-IN-CLASS ADS AND TOOLSET

Google Support is a group of experts that help people use Google products. They provide assistance and troubleshooting for Google apps and websites. They also offer tips on how to use Google products and apps better. They also provide assistance with features that are not available in the app.

**WORLD-CLASS
SUPPORT**

PROS AND CONS OF USING THE GOOGLE SEARCH ENGINE

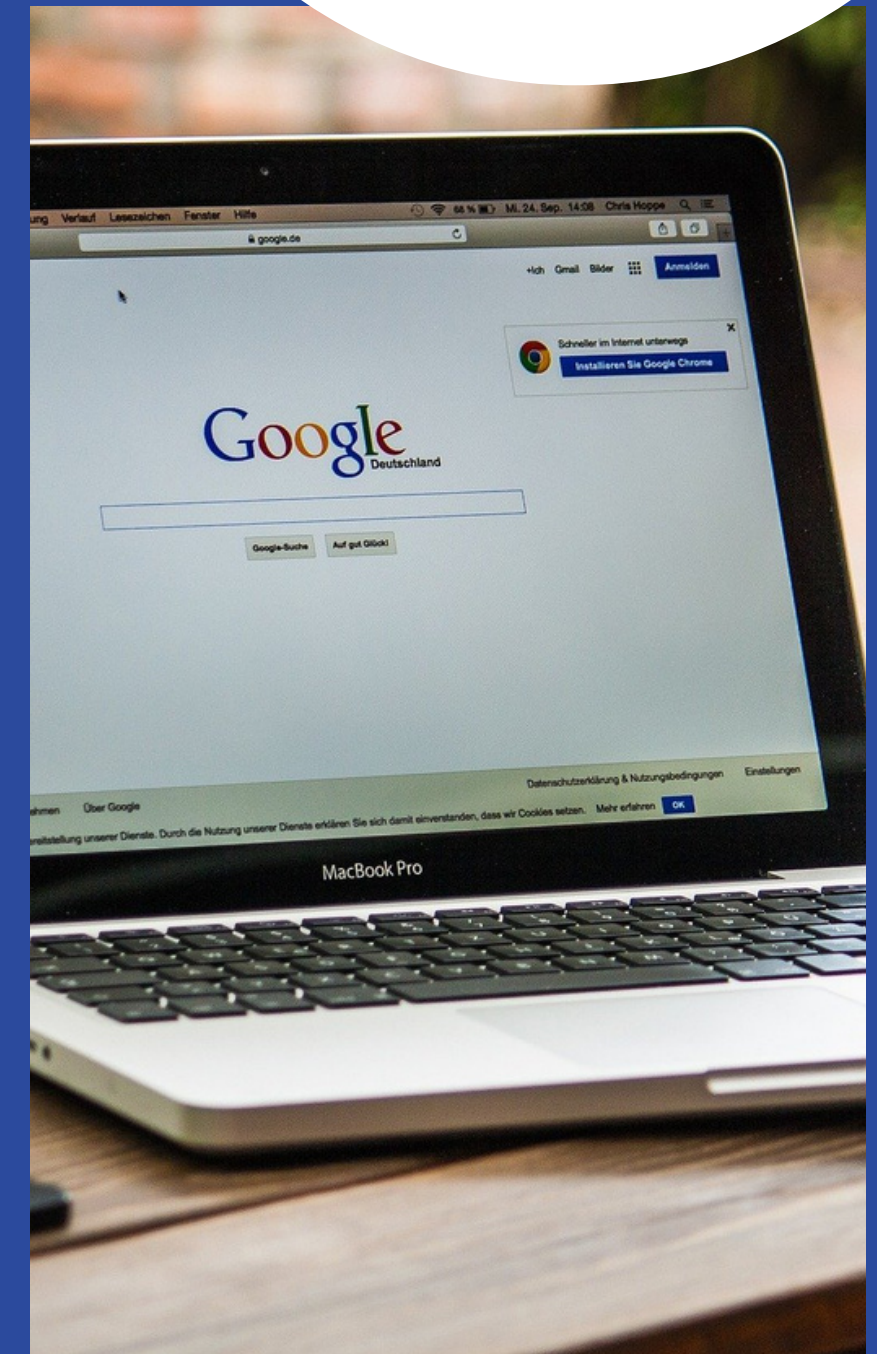
Pros

GOOGLE'S SERVICES ALLOW PEOPLE TO MAKE USE OF TECHNOLOGY IN ORDER TO ORGANIZE AND MAKE SENSE OF INFORMATION. GOOGLE ALSO OFFERS OTHER PRODUCTS AND SERVICES SUCH AS THEIR ADVERTISING NETWORK.



Cons

GOOGLE HAS A HISTORY OF CHANGING THEIR SEARCH ENGINE RESULTS, WHICH CAN AFFECT HOW SOMEONE'S SEARCH TURNS OUT.



CONCLUSION

GOOGLE IS THE LARGEST SEARCH ENGINE IN THE WORLD AND THE PREFERRED SEARCH ENGINE OF INTERNET USERS. THE COMPANY'S ALGORITHMS ALLOW IT TO PROVIDE THE BEST SEARCH RESULTS AND MAKE SURE THEY ARE RELEVANT TO A PERSON'S QUERY. IN ADDITION, GOOGLE HAS THE MOST USERS AND THEREFORE PROVIDES MORE OPPORTUNITIES FOR ADVERTISERS TO REACH THEIR DESIRED AUDIENCE.



Impulse
Digital

Contact us
Let's talk about your digital
marketing needs.

Phone Number
9769285224

Email Address
collabs@theimpulsedigital.com

Website
<https://www.theimpulsedigital.com/>